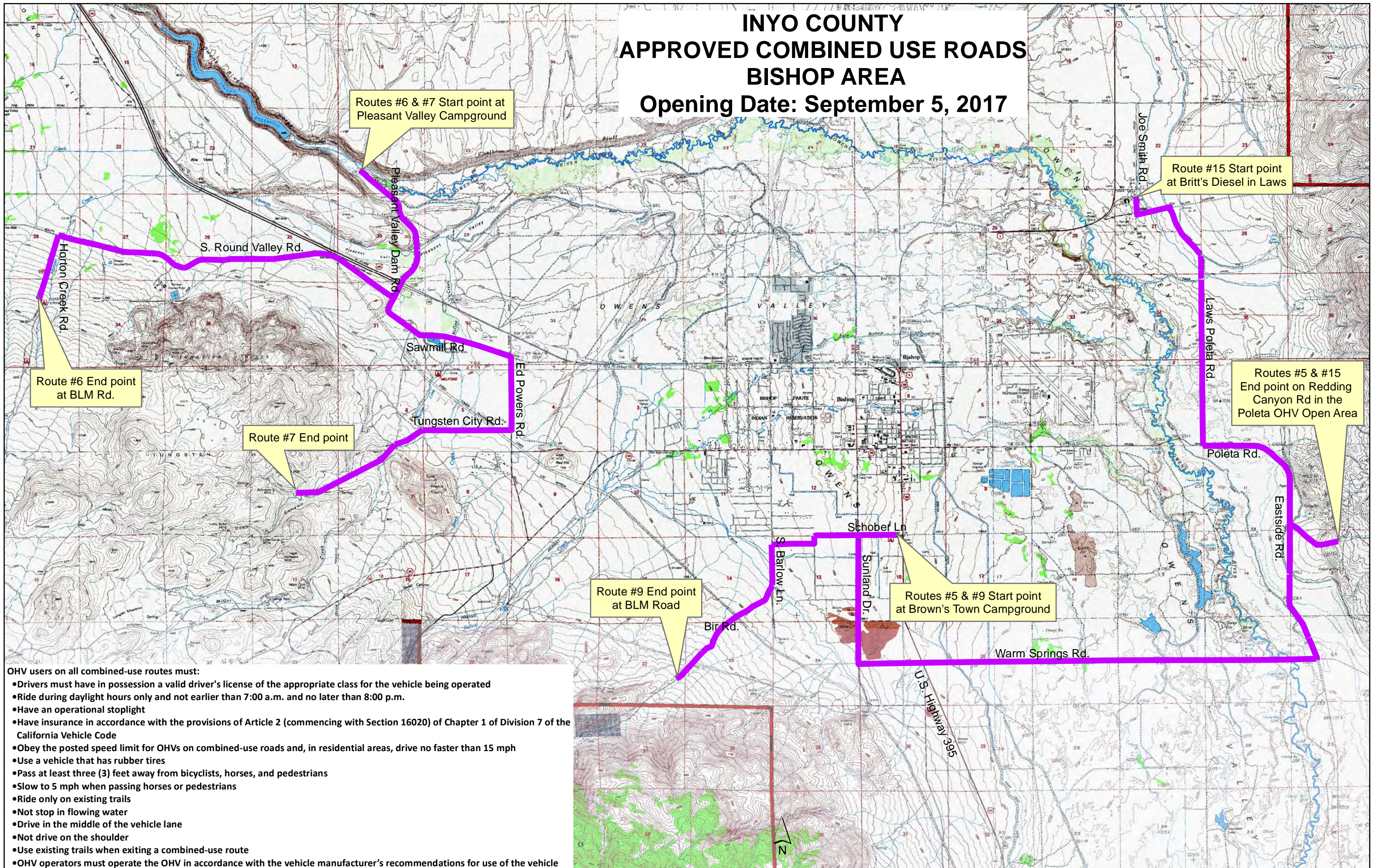


INYO COUNTY APPROVED COMBINED USE ROADS BISHOP AREA

Opening Date: September 5, 2017



Routes #6 & #7 Start point at Pleasant Valley Campground

Route #15 Start point at Britt's Diesel in Laws

Route #6 End point at BLM Rd.

Route #7 End point

Routes #5 & #15 End point on Redding Canyon Rd in the Poleta OHV Open Area

Route #9 End point at BLM Road

Routes #5 & #9 Start point at Brown's Town Campground

- OHV users on all combined-use routes must:
- Drivers must have in possession a valid driver's license of the appropriate class for the vehicle being operated
 - Ride during daylight hours only and not earlier than 7:00 a.m. and no later than 8:00 p.m.
 - Have an operational stoplight
 - Have insurance in accordance with the provisions of Article 2 (commencing with Section 16020) of Chapter 1 of Division 7 of the California Vehicle Code
 - Obey the posted speed limit for OHVs on combined-use roads and, in residential areas, drive no faster than 15 mph
 - Use a vehicle that has rubber tires
 - Pass at least three (3) feet away from bicyclists, horses, and pedestrians
 - Slow to 5 mph when passing horses or pedestrians
 - Ride only on existing trails
 - Not stop in flowing water
 - Drive in the middle of the vehicle lane
 - Not drive on the shoulder
 - Use existing trails when exiting a combined-use route
 - OHV operators must operate the OHV in accordance with the vehicle manufacturer's recommendations for use of the vehicle