

## Want to open a case?

Apply online:  
[www.childsup.ca.gov](http://www.childsup.ca.gov)



## Already have a case & want to make a payment?

### Payment options:

Online:  
[www.casdu.com](http://www.casdu.com)  
(Visa, MasterCard, or checking account)

Phone:  
866-901-3212

Check or Money Order:  
CA SDU  
PO BOX 989067  
West Sacramento, CA 95798

Mobile App:  
CACHildSup  
Available for Android & iPhone

### Cash:



*“Enhance the lives and well-being of children and promote family self-sufficiency by establishing and enforcing support orders.”*

### EASTERN SIERRA Department of Child Support Services

866-901-3212

[www.inyocounty.us](http://www.inyocounty.us)

#### **MAIN Bishop Office**

162 E. Line St.  
San Bishop, CA 93514

#### **Mammoth Lakes Office**

126 Old Mammoth Rd.  
Mammoth Lakes, CA 93546



# DEPARTMENT OF CHILD SUPPORT SERVICES AND YOU

Let's work together



The child support program

works with **parents just like you.**



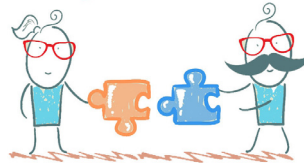
We understand that not all families are the same.



Some parents come to us to establish paternity. Others need help getting a child support order or collecting on an order they already have.



**We work with both moms and dads** because children do better when both parents are involved, even when you are no longer together.



We can **help you in many ways.**



If the payments are not made, we ask **why?**  
Has there been a change of income or other circumstances?



**Working together,** we can help you **find a solution** that works for both parents.



We work with employment, parenting, and other assistance programs **to help you support your children** & promote family self-sufficiency.

*Eastern Sierra Department of Child Support Services*  
162 E. Line St. STE B  
Bishop, CA 93514

