



COUNTY OF INYO
DEPARTMENT OF PUBLIC WORKS
P.O. DRAWER Q
INDEPENDENCE, CA 93526

REQUEST FOR QUOTATION

THIS IS NOT AN ORDER!

Ted Pedersen, Director
 (760) 878-0205
 Fax (760) 878-2001

DATE ISSUED: February 3, 2010

DATE TO BE RETURNED BY: February 17, 2010

To:

Ship to: Inyo County Public Works Dept, 168 N. Edwards St., P.O. Drawer Q Independence, CA 93526

PLEASE QUOTE ON THE FOLLOWING ITEMS: Inyo County Sheriffs Office Fencing Project, Lone Pine Substation

DESCRIPTION:

The Inyo County Public Works Department is requesting proposals for installation of 6 foot high chain link fencing and three gates at the Sheriffs Department Substation, located in Lone Pine, CA. The scope of work for the fencing at this facility is as listed below, and shall be in conformance with the attached specifications and plans.

Scope: In general, generally consists of installing approximately 276 linear feet (l.f.) of 6' (six foot) high galvanized chain link security fencing, a three strand barbed wire topper above the fencing and gates; and one 6' high x 4 foot wide gate and two 6' high x 20' long roll gates; along with all required posts and other fittings. The fencing, when completed will completely enclose an area at the Lone Pine Sheriffs Office at the Lone Pine Substation.

***Note: All contractors responding to this Request for Proposal shall be licensed, bonded, and insured to the satisfaction of Inyo County. When submitting your response, please include a copy of your W-9.**

Should you have questions regarding this Proposal, please contact Paul Hancock, Engineering Assistant at (760) 878-0208.

Indicate any exceptions to the Proposal.

This form shall be returned **signed**, in an envelope marked: **Sheriffs Office Fencing**.

TOTAL COST INCLUDING TAX, MATERIALS AND LABOR _____

IMPORTANT NOTICE to Bidders: The return of a signed copy of Original (white) form shall constitute a promise to supply or perform the enumerated items subject to the terms and conditions shown at prices stated hereon. Quote all prices F.O.B. destination. Do not include federal excise tax on your quotation. Exemption certificates will be furnished with order when applicable. State sales tax should be shown separately.

THE QUOTATION (S) LISTED ABOVE REMAIN VALID AND IN EFFECT THROUGH _____.

DELIVERY WILL BE MADE IN _____ **DAYS FROM RECEIPT OF ORDER, EXCEPT AS OTHERWISE INDICATED.**

TERMS: _____ **DATE:** _____

FIRM NAME _____ **By** _____
 (Title) (Signature)

>> RETURN AN ORIGINAL (WHITE) COPY OF SIGNED FORM TO THE INYO COUNTY PUBLIC WORKS DEPARTMENT DEPT., 168 N. EDWARDS ST., P.O. DRAWER Q, INDEPENDENCE, CA 93526, NO LATER THAN February 15, 2010. A FAXED COPY IS ACCEPTABLE, ONLY IF TOTAL PRICE IS UNDER \$500. IF OVER \$500, MUST BE AN ORIGINAL (WHITE) COPY OF SIGNED QUOTE FORM BY THE REQUESTED DATE. NO FAXED COPIES FOR ITEMS OVER \$500 WILL BE ACCEPTED. YOUR NAME & ADDRESS (NOT HANDWRITTEN) MUST APPEAR ON THE ENVELOPE WHEN RETURNING YOUR QUOTATION. ENVELOPES WITHOUT A RETURN ADDRESS WILL BE DISPOSED OF WITHOUT BEING OPENED.

PROJECT SPECIFICATIONS

Pursuant to **Section 1773 of the Labor Code**, to which this Contract is subject, the prevailing wage rates in Inyo County have been determined by the Director of the State Department of Industrial Relations. These wage rates appear in the Department of Industrial Relations publication entitled "General Prevailing Wage Rates," in effect at the time the project is advertised. Future effective wage rates, which have been predetermined and are on file with the State Department of Industrial Relations, and are printed in said publication. Such rates of wages are also on file with in the offices of the Public Works Department of the County of Inyo and are available to any interested party upon request.

5-1.04 INSURANCE, DEFENSE, AND INDEMNIFICATION.

Bidders' attention is directed to the insurance requirements indicated below. It is highly recommended that bidders confer with their respective insurance carriers or brokers to determine the availability of insurance certificates and endorsements as prescribed and provided herein in advance of bid submission. If an apparent low bidder fails to comply strictly with the insurance requirements, that bidder may be disqualified from award of the Contract.

Contractor shall procure and maintain, for the duration of the contract, insurance against claims for injuries to persons or damages to property which may arise from or in connection with the performance of the work hereunder and the results of that work by the Contractor, his agents, representatives, employees or subcontractors. The cost of such insurance shall be included in the Contractor's Bid.

5-1.04A. MINIMUM SCOPE OF INSURANCE

Coverage shall be at least as broad as:

1. Insurance Services Office Commercial General Liability coverage (occurrence Form CG 00 01) or Insurance Services Office Form (CG 00 09 11 88 Owner's and Contractor's Protective Liability Coverage Form – Coverage for Operations of Designated Contractor).
2. Insurance Services Office Form Number CA 0001 covering Automobile Liability, code 1 (any auto).
3. Workers' Compensation Insurance as required by the State of California and Employers' Liability Insurance.
4. Builder's Risk (Course of Construction) insurance covering all risks of loss less policy exclusions.
5. Surety bonds as described below.

5-1.04B. MINIMUM LIMITS OF INSURANCE:

The Contractor shall maintain limits of no less than:

1. General Liability (including operations, products, and completed operations): \$5,000,000 per occurrence for bodily injury, personal injury and property damage. If Commercial General Liability Insurance or other form with a general aggregate limit is used, the general aggregate limit shall be \$5,000,000 or higher.

If any earthwork, including, but not limited to: road work, excavation, footings, slabs, trenching, digging, etc., is required, the policy or other form of coverage shall include coverage for damage and injury caused by explosion, blasting, collapse, structural injuries, or damage to underground utilities.
2. Automobile Liability: \$1,000,000 per accident for bodily injury and property damage.
3. Worker's Compensation: As required by the State of California.
4. Employer's Liability: \$1,000,000 each accident, \$1,000,000 policy limit bodily injury by disease, \$1,000,000 each employee bodily injury by disease.
5. Course of Construction: Not required.

5-1.04C. DEDUCTIBLES AND SELF-INSURED RETENTIONS:

Any deductibles or self-insured retentions must be declared to and approved by the County. At the option of the County, either: the insurer shall reduce or eliminate such deductibles or self-insured retentions as respects the County, its officers, officials, employees and volunteers; or the Contractor shall provide a financial guarantee satisfactory to the County guaranteeing payment of losses and related investigations, claims administration, and defense expenses.

5-1.04D. OTHER INSURANCE PROVISIONS:

The general liability and automobile liability policies are to contain, or be endorsed to contain, the following provisions:

1. The County, its officers, officials, employees and volunteers are to be covered as insureds with respect to liability arising out of automobiles owned, leased, hired or borrowed by or on behalf of the Contractor; and with respect to liability arising out of work or operations performed by or on behalf of the Contractor, including materials, parts or equipment furnished in connection with such work or operations. General liability coverage can be provided in the form of an endorsement to the Contractor's insurance, or as a separate owner's policy
2. For any claims related to the project, the Contractor's insurance coverage shall be primary insurance as respects the County, its officers, officials, employees and volunteers. Any insurance or self-insurance maintained by the County, its officers, officials, employees, or volunteers shall be in excess of the Contractor's insurance and shall not contribute with it.

3. Each insurance policy required by this clause shall be endorsed to state that coverage shall not be canceled by either party, except after thirty (30) days prior written notice by certified mail, return receipt requested, has been given to the County.

Course of Construction policies shall contain the following provisions:

1. The County shall be named as loss payee.
2. The insurer shall waive all rights of subrogation against the County.

5-1.04E. ACCEPTABILITY OF INSURERS:

Insurance is to be placed with insurers with a current A.M. Best's rating of no less than A:VII. Unless otherwise acceptable to the county. Exception may be made for the State Compensation Insurance Fund when not specifically rated.

5-1.04F. VERIFICATION OF COVERAGE:

Contractor shall furnish the County with original certificates and amendatory endorsements affecting coverage required by this clause. The certificates and endorsements are to be signed by a person authorized by that insurer to bind coverage on its behalf. The certificates and endorsements shall be on forms provided by the County or on other than the County's forms, provided those endorsements or policies conform to the requirements. However, failure to do so shall not operate as a waiver of these insurance requirements. As an alternative to the county's forms, the Contractor's insurer may provide complete copies of all required insurance policies, including endorsements affecting the coverage required by these specifications. All certificates and endorsements are to be received and approved by the County before work commences by mailing or delivering the same to the County of Inyo, Attention: Risk Manager, P. O. Drawer "N", Independence, California 93526. The County reserves the right to require complete, certified copies of all required insurance policies, including endorsements affecting the coverage required by the specifications, at any time.

5-1.04G. WAIVER OF SUBROGATION:

Contractor hereby agrees to waive subrogation that any insurer of Contractor may acquire from Contractor by virtue of the payment of any loss. Contractor agrees to obtain any endorsement that may be necessary to affect this waiver of subrogation. The Workers' Compensation policy shall be endorsed with a waiver of subrogation in favor of the county for all work performed by the Contractor, its employees, agents, and subcontractors.

5-1.04K. DEFENSE AND INDEMNIFICATION:

Contractor shall defend, indemnify and hold harmless the County, its agents, officers, employees, and volunteers from and against all claims, damages, losses, judgments, liabilities, expenses and other costs, including litigation costs and attorney's fees, arising out of, resulting from, or in connection with the performance of this Contract by the Contractor, or Contractor's agents, officers or employees. Contractor's obligation to defend, indemnify and hold the County, its agents, officers,

employees, and volunteers harmless applies to any actual or alleged personal injury, death, or damage or destruction to tangible or intangible property, including the loss of use. Excepting only those liabilities, claims, and damages caused solely and exclusively by the active fault or negligence of the County, the Engineer, or their officers, agents, employees, or volunteers, the Contractor's obligation under this paragraph extends to any claim, damage, loss, liability, expense or other cost which is caused in whole or in part by any act or omission of the Contractor or any of its subcontractors or the agents, employees, suppliers, or materialmen of any of them or anyone directly or indirectly employed by any of them, or anyone for whose acts or omissions any of them may be liable.

Contractor's obligation to defend, indemnify and hold the County, its agents, officers, employees, and volunteers harmless under the provisions of this paragraph is not limited to or restricted by any requirement in this Contract for the Contractor to procure and maintain a policy of insurance coverage.

SECTION 02832 CHAIN LINK FENCES AND GATES

PART 1 - GENERAL

1.01 QUALITY ASSURANCE

A. Regulatory Requirements

1. Standards:

- a. Chain link fencing materials and accessories shall meet Standard Specifications for Public Works construction (1985 edition) published by Building News, Inc., 3055 Overland Ave., Los Angeles, CA 90034.

2. Applicable Documents:

- a. Latest edition of following documents and testing procedures form a part of these specifications:
 - ASTM F1083 - Pipe, Steel, Hot-Dipped Zinc-Coated (Galvanized) Welded, for Fence Structures.
 - ASTM A525 - Steel Sheet, Zinc-Coated (Galvanized) by the Hot-Dip Process, General Requirements.
 - ASTM A392 - Zinc Coated Steel Chain Link Fence Fabric. Fed. Spec. RR-F-191/3C - Fencing, Wire and Posts, Metal (Chain-Link Fence Posts, Top Rails and Braces)
 - ASTM A824 - Metallic-Coated Steel Marcellled Tension Wire for use with Chain Link Fence.
 - ASTM A153 - Zinc Coating (Hot Dip) on Iron Steel Hardware.
 - ASTM A121 - Zinc-Coated (Galvanized) Steel Barbed Wire.
 - Fed. Spec. RR-F-191/2C - Fencing, Wire and Posts, Metal (Chain-Link Fence Gates)
 - ASTM C150 - Portland Cement.
 - ASTM F567 - Installation of Chain Link Fence.
 - ASTM A121 - with Class I – Barbed Wire

1.02 SUBMITTALS

- A. Changes in specifications may not be made after the bid date.
- B. Shop drawings: Submit Shop Drawings for review and approval prior to fabrication and delivery, 2 weeks prior to construction. Layout of fences and gates with dimensions, details, and finishes of components, accessories, and post foundations.
- C. Product data: Manufacturer's catalog cuts indicating material compliance and specified options.
- D. Warranty: 25 years warranty.

PART 2 - PRODUCTS

2.01 MANUFACTURER

- A. Manufacturing members of Chain Link Fence Manufacturers Institute (CLFMI) are acceptable manufacturers for materials specified in this section (fabric, pipe products, accessories).
- B. Anchor Fence/Master-Halco or pre-approved equal manufacturer.

2.02 MATERIALS

A. General

- 1. Use of manufacturer's name and model or catalog number is to establish standard of quality and general configuration desired only.
- 2. Materials shall be new and products of recognized, reputable manufacturers. Used, rerolled, or re-galvanized materials are not acceptable. Obtain chain link fences and gates, including all accessories, fittings, and fastenings, from a single source.
- 3. All materials shall be hot-dip galvanized inside and out.
- 4. Typical material for posts, rails, and gates: Schedule 40 Type I hot-dip galvanized, 1.8 oz./sq. ft. zinc coating (ASTM F-1083); or ASTM A-525, coating designation G 235 (Schedule 40).

B. Fabric

- 1. Chain link fence fabric, woven of 10 gauge wire in 2 in. diamond-mesh pattern. Height of fence as shown on Drawings. Chain link fence fabric shall be of high-grade commercial quality with a minimum breaking strength of 1,290 lbs. with twisted and barbed top selvage, twisted and barbed bottom selvage where indicated. Fabric shall meet the requirements of ASTM A392, Class 2, zinc coated steel with minimum weight of zinc of 1.2 oz./sq. ft. of uncoated wire surface.

C. Framework

1. General

- a. Fed. Spec. RR-F-191, fence, posts and accessories, except as herein modified. All posts, rails and braces shall conform to Fed. Spec RR-F-191/3C, Class 1 Grade A and /or Grade B.

- b. Steel pipe, Grade A, heavy wall, round, and shall be produced to conform to ASTM F-1083, standard weight (Schedule 40) and have minimum zinc coating of 1.8 oz/sq. ft.
- D. Line Posts
- 1. Line posts to be 2-3/8 in. minimum O.D. Schedule 40 galvanized steel pipe for 6' fencing.
- E. Terminal Posts (end, corner, angle, and pull posts)
- 1. Minimum 2-1/2" in. O.D., Schedule 40 galvanized steel pipe for 6' fencing.
- F. Gate Posts:
- 1. Single width of gate over 6 feet to 12 feet wide, 3 in. O.D. or larger, Schedule 40 galvanized steel pipe.
- G. Chain link fence accessories: Provide items required to complete fence system. Galvanize each ferrous metal item and finish to match framing.
- 1. Post Caps
 - a. Formed steel, cast malleable iron, or aluminum alloy weathertight closure cap for tubular posts. Provide one cap for each post. Cap to have provision for barbed wire when necessary.
 - 2. Tension Wire (Bottom Reinforcing Wire)
 - a. **7 gauge**, [0.192" (4.88 mm)] diameter core wire with tensile strength of 75,000 psi (517 MPa). Type II zinc coated (galvanized), Class 2 (1.2 oz/sq. ft of uncoated wire).
 - 3. Tension (stretcher) bars
 - a. Tension (stretcher) bars: One piece lengths equal to 2 inches (50 mm) less than full height of fabric with a minimum cross-section of 3/16" x 3/4" (4.76 mm x 19 mm). Provide tension (stretcher) bars where chain link fabric meets terminal posts.
 - 4. Tension (stretcher) and brace bar bands
 - a. Heavy pressed steel, 3/4" x 1/10" nominal, spaced not over 15 in. o.c. to secure tension bars to tubular end, corner, pull, and gate posts.
 - 5. Top Rail and Horizontal Brace
 - a. Minimum 1-5/8" (1.660") O.D. pipe, 2.27 lbs./lf. (Schedule 40),
 - b. Connect top rail to line posts using 2-3/8" x 1-5/8" barbed wire supporting arms.
 - c. Connect to terminal posts with pressed steel rail end cap and brace bands per ASTM F626. Attachment bolts for brace bands: 5/16" x 1-1/2" carriage bolts with nuts.
 - 6. Braces
 - a. Posts braces, where called for on the Drawings or in these Specifications, shall be of same material as rails, and extend from terminal post to first adjacent line post. Securely fasten to posts with pressed steel brace rail ends and brace bands per ASTM F626. Secure truss from line post to base of terminal post with 3/8" truss rod equipped with galvanized turnbuckle.
 - 7. Top rail and brace rail ends:
 - a. Pressed steel per ASTM F626, for connection of rail and brace to terminal posts.

8. Top rail sleeves:
 - a. 7" (178 mm) expansion sleeve with spring, allowing for expansion and contraction of top rail.
9. Ties:
 - a. Wire ties: 9 gauge [0.148" (3.76 mm)] galvanized steel wire for attachment of fabric to line posts. Double wrap 13 gauge [0.092" (2.324 mm)] for rails and braces. Hog ring ties of 12-1/2 gauge [0.0985" (2.502 mm)] for attachment of fabric to tension wire.
10. Barbed Wire:
 - a. Class 2b steel wire double-strand, 12-1/2 gauge, twisted line wire with galvanized steel, 4 point barbs spaced approximately 5" on center.
11. Barbed wire supporting arms:
 - a. Pressed steel arms with provisions for attaching 3 rows of barbed wire. Arms shall withstand 250 lb. (113.5 kg) downward pull at outermost end of arm without failure.
 - 1). Provide 90° - 3 strand, single arms.
 - 2). Provide intermediate arms with hole for passage of top rail.
12. Truss rods & tightener:
 - a. Steel rods with minimum diameter of 5/16" (7.9 mm). Capable of withstanding a tension of minimum 2,000 lbs.
13. Nuts and bolts:
 - a. Galvanized.

H. Gates

1. General Requirements for Gates:
 - a. Conform to Fed. Spec. RR-F-191/2C.
 - b. Install fabric to match fence, framed by means of tension bars and tension bands not exceeding a spacing of 15 inches o.c.
 - c. Construct gate frames of pipe members welded at all corners or assembled with fittings, and as shown on plans.
 - d. Paint steel welds with zinc-based paint.
 - e. Where corner fittings are used, gates to have truss rods of 3/8-inch minimum nominal diameter to prevent sag or twist.
 - f. Provide vertical intermediate bracing at gate leaves as required. Space so no members are more than 8 feet apart. Provide horizontal intermediate brace at all gate leaves.
 - g. Attach hardware with rivets or by other means, which will provide security against removal or breakage.
 - h. Provide diagonal cross-bracing consisting of 3/8-inch diameter adjustable length truss rods on gates to provide frame rigidity without sag or twist.
 - i. Gate rail (actual gate frame) shall be 1 7/8" or greater in diameter.
2. Gate Hardware (Submit 2 weeks prior to construction):
 - a. Provide the following hardware and accessories for each chain link gate:
 - 1). Hinges:

- a) Pressed steel or malleable iron to suit gate size, non lift-off type, offset to permit 180-degree gate opening.
 - b) Provide 1 pair of hinges for each leaf. Provide gate hinges of adequate size for gate and with large bearing surfaces for clamping in position.
 - c) Hinges shall not twist or turn under action of gate. Provide gates capable of being opened and closed easily by one person.
- 2). Latch:
- a) Forked type, to permit operation from either side of gate.
 - b) Provide padlock eye as integral part of latch.

PART 3 - EXECUTION

3.01 QUALITY ASSURANCE

A. Qualifications of Installer:

1. Installer: Minimum of 3 years experience installing similar commercial fencing or completion of 10 equivalent installations.

3.02 PROJECT/SITE CONDITIONS

A. Fencing and gates are to be installed on relatively flat ground

1. Notify Owner's Representative in writing of improper conditions of work.
2. Do not proceed with work until unsatisfactory conditions have been corrected in manner acceptable to Owner.
3. All grading and minor re-grading required for installation of the chain link fence shall be performed by the Contractor at no additional cost to the Owner.

3.03 PREPARATION

- #### A. Measure and lay out complete fence line. Measure parallel to surface of ground. Locate and mark position of posts. Locate line posts at equal distance spacing, not exceeding 10 foot on center. Locate corner posts at positions where fence changes direction more than 10 degrees.

3.04 INSTALLATION, CHAIN LINK FENCING

A. Install in accordance with manufacturer's recommendations and reviewed Shop Drawings.

B. Location and Height:

1. Chain link fencing to be installed at height and in locations shown on Plans.
2. Chain link fabric shall parallel existing ground at height specified on the Plans.

C. Drill holes for post footings in firm, undisturbed compacted soil.

1. Post footing holes: Diameter equals to 3 times the diameter of the post.
2. Hole depths line posts: Excavate approximately 3 inches lower than post bottom with bottom of posts set not less than 30 inches below surface when in firm, undisturbed soil. If

rocky soil exists and the hole cannot be excavated to 30" in depth because of rocks in excess of 12" in diameter, the hole may be excavated to 24" in depth and filled with concrete, except that every third line post must be excavated to 30" in depth.

3. Hole depths end/gate posts: Excavate approximately 3 inches lower than post bottom with bottom of posts set not less than 36 inches below surface when in firm, undisturbed soil.
4. Excavate deeper as required for adequate support in soft and loose soils, and for post with heavy lateral loads.
5. Concrete at minimum shall be: ASTM C150, normal sulfate resisting portland cement; 2500 psi at 28 days; 3" slump; ¾" size aggregate, equivalent to 5 sack concrete mix.

D. Post Installation:

1. Place concrete around posts in continuous pour, tamp for consolidation.
2. Check each post for vertical and top alignment, and hold in position during placement and finishing operations.
3. Accurately locate post as to alignment and grade and set posts plumb to 1/4 inch in 10 feet.

E. Footings:

1. For footings with exposed surfaces, trowel finish tops and slope or dome to direct water away from posts.
2. Set keepers, stops, sleeves, and other accessories into concrete as required.
3. Concrete footings shall be allowed to cure and posts shall not be disturbed for a minimum of 72 hours after placement of the concrete.

F. Brace Assemblies

1. Install braces so posts are plumb when diagonal rod is under proper tension.
2. Provide post braces for each gate, corner, pull, and end post for use with fabric 6 feet or more in height. Extend brace between post and adjacent line post at approximately mid-height of fabric and provide truss rod from line post back to gate, corner, pull or end post, with a turnbuckle for adjustment.
3. Truss rods may be eliminated in any line of fence where there is a continuous center rail.

G. Post Tops:

1. Provide post top with a hole suitable for through passage of top rail. Post tops to fit over outside of posts and prevent moisture from entering posts.

H. Fabric:

1. Pull fabric taut and tie to posts, rails, and tension wires.
2. Install fabric on outer side of fence, and anchor to framework so fabric remains in tension after pulling force is released.
3. Stretch tight between terminal posts and secure to line posts with fabric bands on 15-inch centers or with tie wires on 12-inch centers, and to top rail with tie wires on 18-inch centers.
4. Cut fabric to form one continuous piece between terminal posts.

I. Tension Bars (Stretcher Bars):

1. Thread through fabric and secure to terminal posts with metal brace bar bands spaced not over 15 inches on center.

J. Gates:

1. Install gates plumb, level, and secure for full opening without interference.
2. Install ground-set items in concrete for anchorage, as recommended by fence manufacturer.
3. Adjust hardware for smooth operation and lubricate where necessary.

K. Tie Wires:

1. Use U-shaped clips of wire, securely fastened around pipe to which attached, clasping pipe and fabric firmly.
2. Bend ends of wire to minimize hazards to persons or clothing.

L. Fasteners:

1. Install nuts for tension band and hardware bolts on side of fence opposite fabric side. Fully tighten in place.

M. Line Posts:

1. Equally space at 10 feet on centers maximum, unless otherwise indicated.

N. Top Rail:

1. Pass through post tops and provide continuous brace from end to end of each stretch of fence.
2. Top rails: Provide in lengths not less than 20 feet and fit with couplings.
3. Provide couplings not less than 7 inches long, with .070-inch minimum wall thickness and allowing for expansion and contraction of rail.
4. Open seam outside sleeves are to be permitted only with a minimum wall thickness of 0.100 inches.
5. Provide suitable ties or clips in sufficient number for attaching fabric securely to top rail at intervals not exceeding 18-inch centers.
6. Provide fittings for attaching top rail to each gate, corner, pull, and end post.
7. Install outside sleeve type couplings not more than 20 feet on center.
8. Fasten to terminal posts with suitable steel connectors.

O. Brace and Struts:

1. Install at mid-point between top rail and ground, and extend from terminal post to first adjacent line, gate, or corner post.
2. Securely anchor braces to post with suitable steel fittings and trussed from line or corner post back to terminal post with tensioned return rods.

P. Tie Wire Ends:

1. Provide tie wire ends with double-knuckles so that exposed ends will not present a hazard to persons or clothing.

Q. Install fence plumb and true to line, tight, and free of buckles or kinks. Except as otherwise indicated on the Plans, install in accordance with Product Manual published by Chain Link Fence Manufacturer's Institute and ASTM F567, Installation of Chain Link Fence. Handle materials carefully before and after erection. Replace any damaged materials.

R. Hog Rings:

1. Place hog rings 18" to 24" apart along bottom wire.

- S. Barbed wire shall be stretched by mechanical stretcher or other devices designed for this use. Stretching by motor vehicle will not be permitted. The length between pull posts shall not exceed 100 feet.

3.05 FIELD QUALITY CONTROL

A. Tests

- 1. Fence fabric: Each fence panel shall be constructed such that it will pass the following test:
 - a. Deflection of fence fabric: No greater than 2" when a force of 30 lbs. is applied in center of panel, perpendicular to plane of fence fabric. Fabric shall return to original position when force is released.

3.06 CLEANING

- A. Adjust gates, brace rails, and tension rods for rigid installation. Tighten all fasteners, fittings, and accessories. Remove excess and waste materials from Project site. Knock down any dirt footing spoils to an existing finished grade.

PART 4 - PAYMENT

4.01 PAYMENT

- A. Payment for chain link fence will be made at the lump sum contract price.
- B. Payment for chain link gates will be included in the lump sum contract price.
- C. The price shall be full compensation for furnishing all materials, and for all preparation, erection, and installation of these materials, and for all labor, equipment, tools, incidentals and travel necessary to complete the item.

END OF SECTION

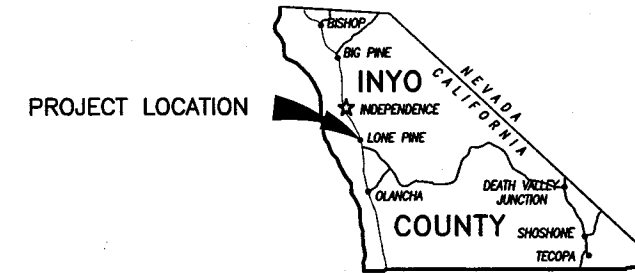
INDEX OF SHEETS

- 1 TITLE AND LOCATION MAP
- 2 EXISTING FACILITIES SITE PLAN
- 3 FENCE DETAILS



COUNTY OF INYO
DEPARTMENT OF PUBLIC WORKS
**PLANS FOR THE INYO COUNTY SHERIFFS OFFICE
FENCE PROJECT**

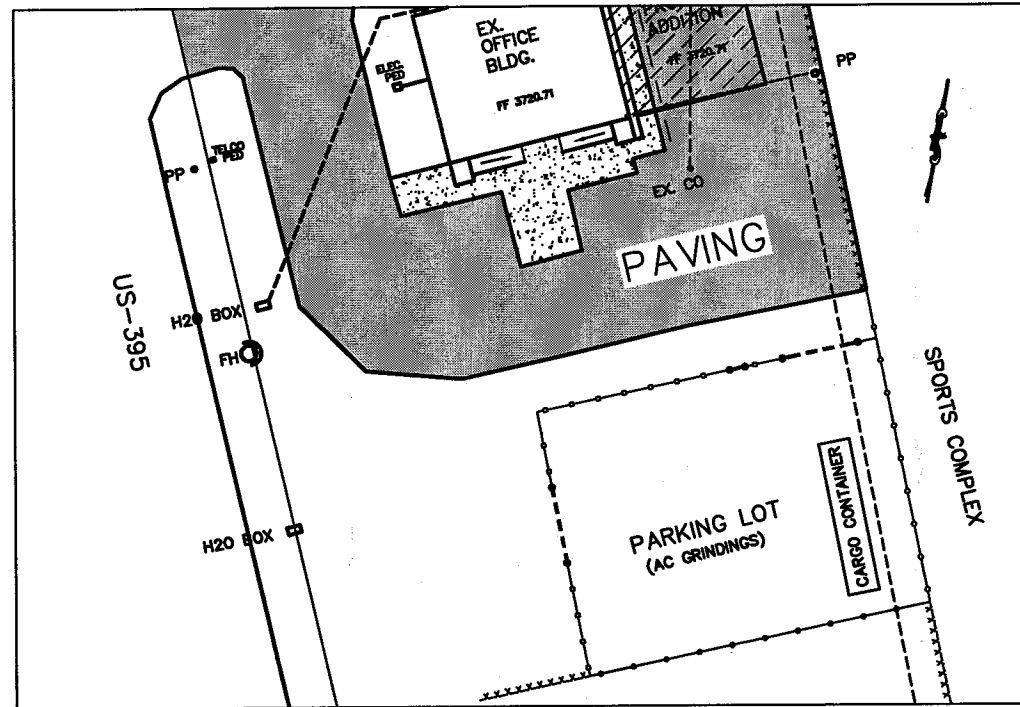
PROJECT. NO. RR-09-028



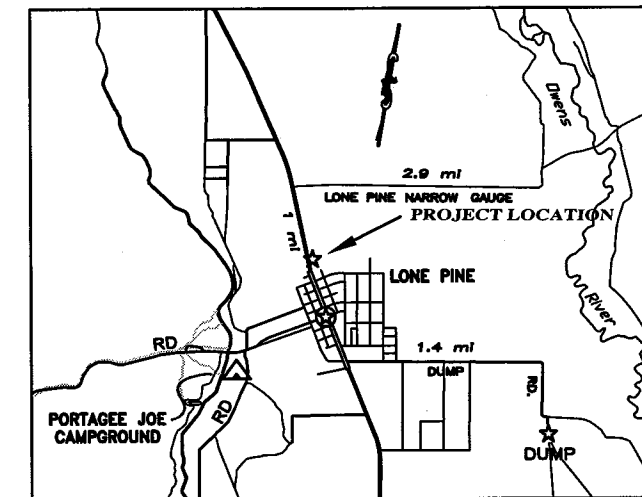
VICINITY MAP
SCALE: NONE

GENERAL NOTES

1. THE CONTRACTOR SHALL IMMEDIATELY NOTIFY THE ENGINEER OF DISCREPANCIES BETWEEN THE INFORMATION SHOWN ON THESE DRAWINGS AND THE CONDITIONS EXISTING IN THE FIELD. THE CONTRACTOR SHALL COMPARE ALL DRAWINGS AND VERIFY THE FIGURES BEFORE LAYING OUT THE WORK AND WILL BE RESPONSIBLE FOR ANY ERRORS WHICH MIGHT HAVE BEEN AVOIDED THEREBY. IF THE CONTRACTOR FAILS TO NOTIFY THE ENGINEER IN A TIMELY MANNER OF ANY APPARENT ERROR OR OMISSION ON THE PLANS OR SPECIFICATIONS, THE CONTRACTOR SHALL BE RESPONSIBLE FOR CORRECTING WORK INCORRECTLY DONE AT THE CONTRACTOR'S OWN EXPENSE.
2. PAYMENT FOR WORK SHOWN ON THESE PLANS EITHER SPECIFIED OR INFERRED, BUT NOT IN THE BID PROPOSAL SHALL BE CONSIDERED AS INCLUDED IN OTHER ITEMS OF WORK.
3. ALL CONSTRUCTION AND MATERIALS SHALL CONFORM TO THESE PLANS AND SPECIFICATIONS, THE OCCUPATIONAL SAFETY AND HEALTH ADMINISTRATION STANDARDS, THE 2003 INTERNATIONAL BUILDING CODE (IBC), CALIFORNIA BUILDING CODE (CBC), THE UNIFORM BUILDING CODE (UBC), THE UNIFORM FIRE CODE (UFC), AND OTHER GOVERNING REGULATIONS.
4. ALL CONSTRUCTION WILL BE SUBJECT TO FINAL APPROVAL BY THE INYO COUNTY PUBLIC WORKS DEPARTMENT.
5. INSPECTION AND DURING CONSTRUCTION SHALL BE REQUIRED TO ENSURE CONSTRUCTION MATERIALS AND METHODS ARE IN ACCORDANCE WITH THE INYO COUNTY PUBLIC WORKS STANDARD SPECIFICATIONS AND THESE PLANS.
6. THE PROJECT SHALL BE BUILT PER PLAN. ALL FIELD CHANGES MUST BE PRE-APPROVED BY THE INYO COUNTY ENGINEER.
7. IN ACCORDANCE WITH THE GENERALLY ACCEPTED CONSTRUCTION PRACTICES, THE CONTRACTOR WILL BE SOLELY AND COMPLETELY RESPONSIBLE FOR THE CONDITIONS OF THE JOB SITE, INCLUDING SAFETY OF ALL PERSONS AND PROPERTY DURING PERFORMANCE OF THE WORK. THIS REQUIREMENT WILL APPLY CONTINUOUSLY AND NOT BE LIMITED TO NORMAL WORKING HOURS. THE DUTIES OF THE PROJECT CIVIL ENGINEER DO NOT INCLUDE REVIEW OF THE ADEQUACY OF THE CONTRACTOR'S SAFETY IN, ON OR NEAR THE CONSTRUCTION SITE.
8. CONTRACTOR MUST NOTIFY UNDERGROUND SERVICE ALERT (800) 227-2600, TWO (2) WORKING DAYS PRIOR TO ANY DIGGING OR EXCAVATION.



SCALE: 1" = 50'



LOCATION MAP
SCALE: NONE

ABBREVIATIONS:

AB	AGGREGATE BASE
AC	ASPHALT CONCRETE
AC.	ACRE
@	AT
APPROX.	APPROXIMATE
AVE.	AVERAGE
C&G	CURB & GUTTER
CF	CUBIC FEET
CL	CENTER LINE
CO.	CLEAN OUT
CONSTR.	CONSTRUCT
° OR DEG	DEGREE(S)
DESC.	DESCRIPTION
DI	DROP INLET
DIA.	DIAMETER

LEGEND:

	← DETAIL IDENTIFICATION NUMBER ← NUMBER OF SHEET ON WHICH DETAIL IS LOCATED
	CENTER LINE
	PROPERTY LINE
	FENCE (EX)

Drawing Prepared by: INYO COUNTY PUBLIC WORKS 168 N. Edwards, P.O. Drawer Q Independence, CA 93526 (760) 878-0201		INYO COUNTY SHERIFFS OFFICE FENCE PROJECT LONE PINE SUBSTATION, CA	
Drawn by: P. Hancock	Date: 1/10	Checked By: T. Pedersen	Date: 3/06
Drawing Name: LP--SHERIFF--FENCE	SHEET 1 OF 3		

US-395

PP TELCO PED

H2O BOX

FH

EX. OFFICE BLDG.

FF 3720.71

PROPOSED ADDITION

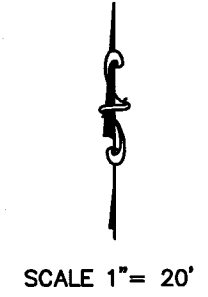
FF 3720.71

EX. CO

PAVING

PP

H2O BOX



SCALE 1" = 20'

70.0'

30.0'

PARKING LOT (AC GRINDINGS)

EX. SEWERLINE PROTECT IN PLACE

CARGO CONTAINER

90.0'

G1

G2

G1

±5.0'

SPORTS COMPLEX

EX. DRIVEWAY

CONSTRUCTION NOTES

- 1. DIMENSIONS ARE APPROXIMATE
- 2. CONTRACTOR TO FIELD VERIFY ALL MEASUREMENTS PRIOR TO CONSTRUCTION
- 3. CONTRACTOR TO COORDINATE FENCE INSTALL WITH INYO SHERIFFS OFFICE, CONTACT ANDY MARSH AT 760-876-5606

LEGEND

- INSTALL NEW GATE AS LISTED BELOW
- REMOVE EXISTING 5' CHAIN LINK FENCING SLEEVE EXISTING POSTS AND INSTALL NEW 6' HIGH POSTS AND FABRIC AND 3 STRAND BARB WIRE TOPPER
- INSTALL NEW 6' HIGH CHAIN LINK FENCE AND 3 STRAND BARB WIRE TOPPER
- EXISTING 5' HIGH CHAIN LINK FENCING

GATE SCHEDULE

- NEW 20' WIDE ROLL GATE
- NEW 4' WIDE WALK GATE

Plans Prepared by:
 INYO COUNTY PUBLIC WORKS
 168 N. Edwards, P.O. Drawer Q
 Independence, CA 93526
 (760) 878-0201

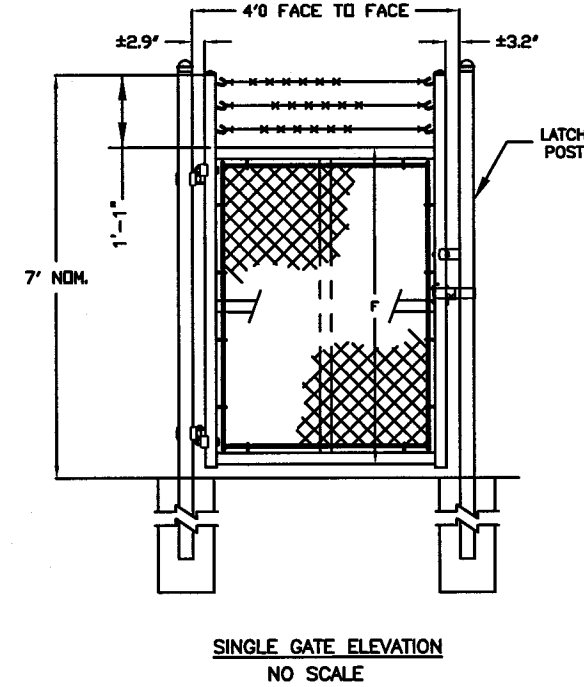
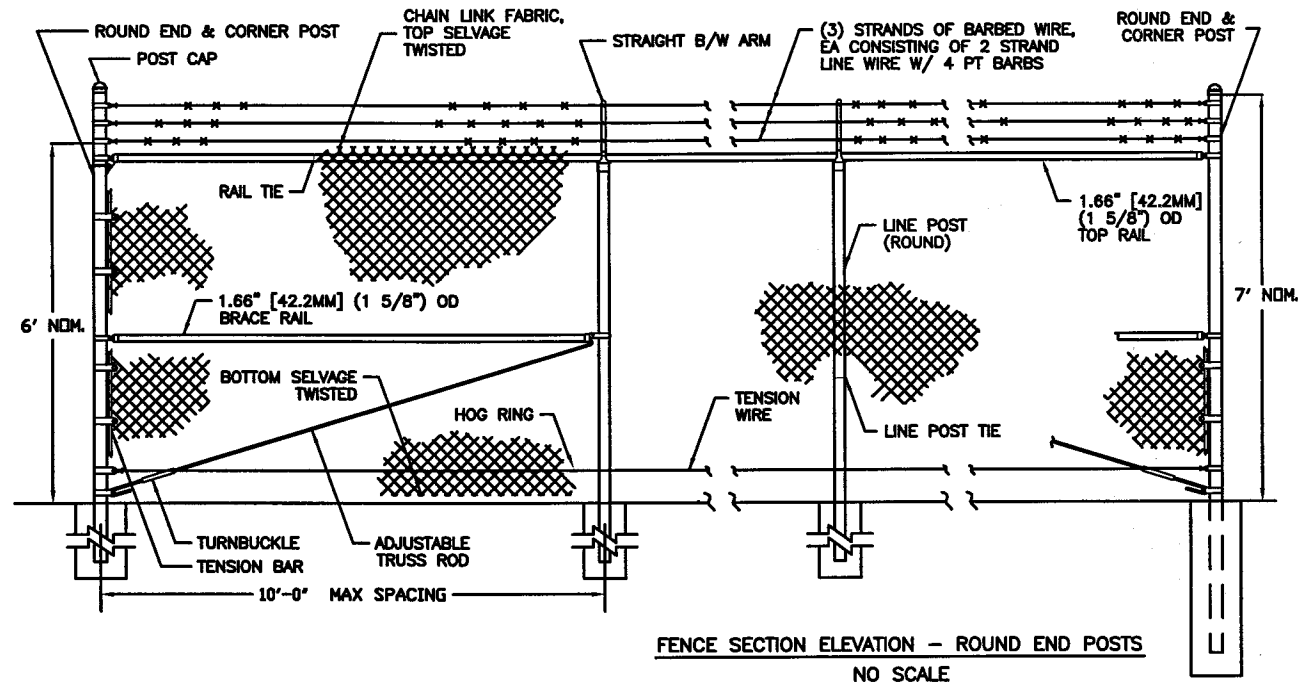
**INYO COUNTY SHERIFFS
 OFFICE FENCING PROJECT
 LONE PINE SUBSTATION, CA**

Drawn By: P. Hancock

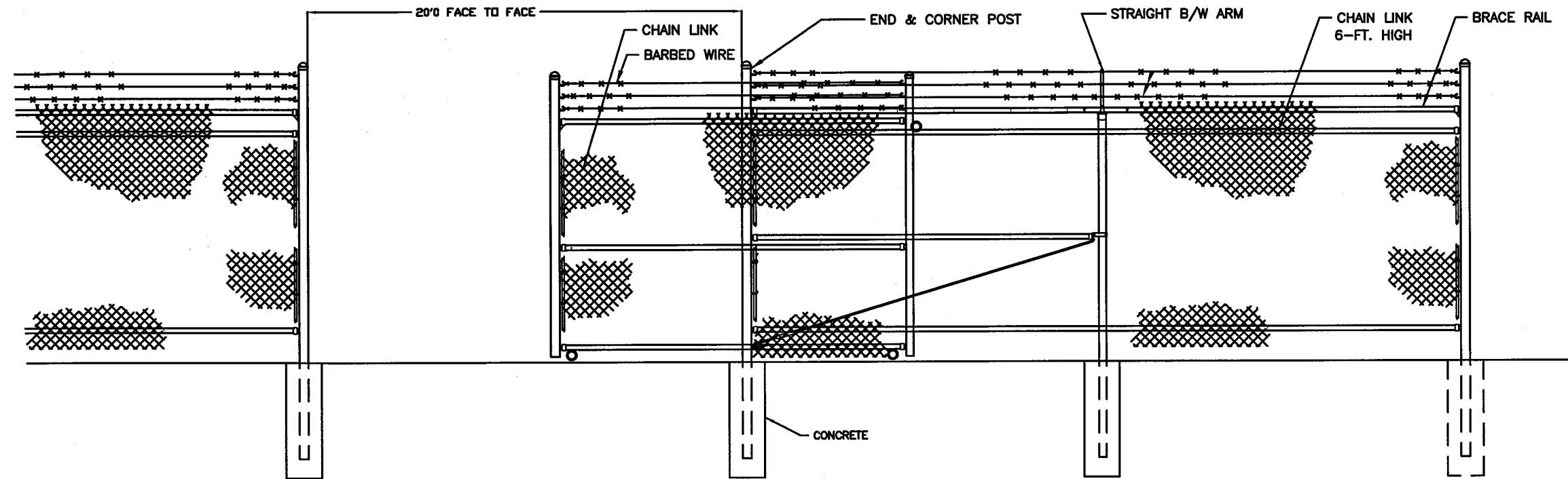
Date: January 2010

Drawing Name: LP-SHERIFF-FENCE.dwg

SHEET 2 of 3
GENERAL PLAN



ROLL GATE ELEVATION - ROUND END POSTS
NO SCALE



- NOTES:
1. METRIC DIMENSIONS ARE NOMINAL EQUIVALENTS TO U.S. DIMENSIONS.
 2. SPECIFICATIONS SHOWN CAN BE CHANGED BY INYO COUNTY ONLY.
 3. FOOTING WIDTH TO BE (4) X POST WIDTH. LINE POST MINIMUM DEPTH 30".
 4. TERMINAL/GATE POST MINIMUM DEPTH 36".

SINGLE LEAF OR ROLL GATES, ROUND GATE FRAME		
NOM HEIGHT (H)	UPRIGHT HT (U)	FRAME HT (F)
NOM HT INCLUDING BARBED WIRE		ACTUAL DIM
7'-0" [2438MM]	6'-10" [2388MM]	6'-8 1/2" [2045MM]

Plans Prepared by:
INYO COUNTY PUBLIC WORKS
 168 N. Edwards, P.O. Drawer Q
 Independence, CA 93526
 (760) 878-0201

INYO COUNTY SHERIFFS
OFFICE FENCING PROJECT
 LONE PINE SUBSTATION, CA

Drawn By: P. Hancock

Date: January 2010

Drawing Name:
 LP-SHERIFF-FENCE.dwg

SHEET 3 of 3
 FENCE DETAILS

