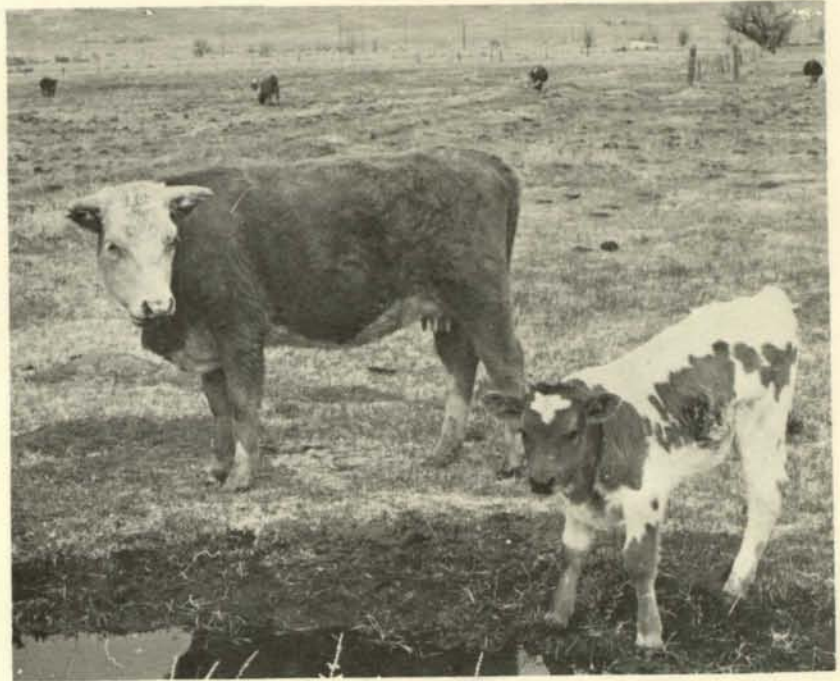


1976
ANNUAL
CROP & LIVESTOCK
REPORT

INYO-MONO COUNTIES
DEPARTMENT
OF
AGRICULTURE

OFFICE OF:
AGRICULTURAL COMMISSIONER
DIRECTOR OF WEIGHTS & MEASURERS



Inyo-Mono Department of Agriculture
207 W. SOUTH STREET • BISHOP, CALIFORNIA 93514



COUNTY OF INYO

EDMOND W. HALE
AGRICULTURAL COMMISSIONER
DIRECTOR OF WEIGHTS AND MEASURES

207 W. SOUTH ST. • BISHOP, CA 93514 • TELEPHONE 873-5891

April 8, 1977

To: Richard E. Rominger, Director
California Department of Food & Agriculture

And The Honorable

Inyo County Board of Supervisors
Herbert London, Chairman
Dick A. Engel
Wilma Muth
Vernon E. Johnson
Richard B. McDonald

Mono County Board of Supervisors
Don Sharp, Jr., Chairman
Arch Mahan
Eugene Hanson
Joan Green
Coy Ziglar

Enclosed is the 1976 Agricultural Crop Report for Inyo and Mono Counties, as required by Section 2279 of the California Agricultural Code.

The gross agricultural production for Inyo County remained approximately the same as in 1975 with a slight decrease in value, and in Mono County a considerable increase was recorded. The decrease in Inyo County was the result of less cattle sold in 1976. Cattle prices through most of the year were depressed and the forced sale of cattle due to the drought began near the end of the year and will affect next year's production. The increase in Mono County was a result of increased alfalfa acreage and other factors.

Alfalfa, the major field crop of both counties, brought good returns throughout 1976 although average yields were reduced slightly due to the drought.

Values shown in this report are gross returns only.

A sincere thank you is due to all who provided the information and records necessary for the compilation of this report. A special word of appreciation to P. Dean Smith, Inyo-Mono County Farm Adviser, for his assistance.

Respectively Submitted,

Edmond W. Hale
Agricultural Commissioner

INYO COUNTY

LIVESTOCK

Item	PRODUCTION			Unit	VALUE	
	Year	Number Head	Liveweight (cwt.)		Price Per Unit	Total
Cattle & calves						
Calves-Steers	1976	6,525	27,731	cwt.	\$ 38.00	\$ 1,053,778
Heifers	1976	4,350	17,400	cwt.	31.00	539,400
Cows	1976	3,625	36,250	cwt.	21.00	761,250
All cattle and						
Calves-(adj)	1975	18,800	92,317	cwt.	29.00	2,677,193
Feeders (Gain)	1976	2,558	x	cwt.	37.00	277,870
	1975	2,500	x	cwt.	35.00	350,000
Sheep and Lambs	1976	1,200	1,080	cwt.	43.00	46,440
	1975	1,625	1,706	cwt.	42.00	71,652
TOTAL LIVESTOCK				1976	\$ 2,678,738	
				(adjusted)	1975	\$ 3,098,845

LIVESTOCK PRODUCTS

Item	Year	Production	Unit	Price Per Unit	Total
Milk, Manufacturing	1976	---	cwt.	---	---
	1975	2,770	cwt.	\$ 6.71	\$ 18,600
Wool	1976	9,600 lbs.	cwt.	40.00	3,840
	1975	13,000 lbs.	cwt.	45.00	5,850
TOTAL LIVESTOCK PRODUCTS				1976	\$ 3,840
				1975	\$24,450

LIVESTOCK INVENTORY

	For Period Ending	
	January 1, 1976	January 1, 1977
Cattle & Calves	21,800	24,800
Cows & Heifers that have calved	14,500	14,000
Sheep	1,200	1,000

FIELD CROPS

PRODUCTION						VALUE	
Item	Year	Harvested Acreage	Tons Per Acre	Total Tons	Unit	Price Per Unit	Total
Alfalfa Hay	1976	3,154	5.25	16,559	ton	\$ 76.50	\$ 1,266,764
	1975	3,154	5.5	17,347	ton	60.00	1,040,820
Irrigated Pasture	1976	9,075	x	x	acre	5.87	53,270
	1975	9,110	x	x	acre	7.50	68,325
Dry Grazing	1976	179,966	x	x	acre	.66	118,778
	1975	179,910	x	x	acre	.61	109,745
TOTAL FIELD CROPS						1976	\$ 1,438,812
						1975	\$ 1,218,890

FRUIT AND VEGETABLE PRODUCTION

Item	Year	Harvested Acreage	Tons Per Acre	Total Tons	Unit	Price Per Unit	Total
Misc. Fruit	1976	28	1.93	54	ton	\$ 262	\$ 14,148
	1975	28	1.78	50	ton	234	11,700
TOTAL FRUIT AND VEGETABLES						1976	\$ 14,148
						1975	\$ 11,700

APIARY PRODUCTS

Item	Year	Production	Unit	Price Per Unit	Total
Honey	1976	80,150	lb.	\$.40	\$ 32,060
	1975	36,280	lb.	.41	14,874
TOTAL APIARY PRODUCTS				1976	\$ 32,060
				1975	\$ 14,874

INYO COUNTY TOTALS

	1975	1976
Livestock	\$ 3,098,845	\$ 2,678,738
Livestock Production	24,450	3,840
Field Crops	1,218,890	1,438,812
Fruit and Vegetable Production	13,298	14,148
Apiary Products	14,874	32,060
TOTALS	\$ 4,370,357	\$ 4,167,598

MONO COUNTY

LIVESTOCK

Item	Year	PRODUCTION		VALUE		
		Number Head	Liveweight (cwt.)	Unit	Price Per Unit	Total
Cattle & Calves						
Calves-Steers	1976	8,534	36,270	cwt.	\$ 38.00	\$ 1,378,260
Heifers	1976	5,689	22,756	cwt.	31.00	705,436
Cows	1976	1,340	13,400	cwt.	21.00	281,400
All cattle and calves (adj)	1975	15,725	59,739	cwt.	30.50	1,822,040
Sheep & Lambs	1976	36,500	32,850	cwt.	43.00	1,412,550
	1975	36,400	32,760	cwt.	42.00	1,375,920
TOTAL LIVESTOCK				1976	\$ 3,777,646	
				1975	\$ 3,197,960	

LIVESTOCK PRODUCTS

Item	Year	Production (cwt.)	Unit	Price Per Unit	Total
Wool	1976	4,000	cwt.	\$ 69.00	\$ 276,000
	1975	4,000	cwt.	45.00	180,000
TOTAL LIVESTOCK PRODUCTS				1976	\$ 276,000
				1975	\$ 180,000

LIVESTOCK INVENTORY

	For Period Ending	
	January 1, 1976	January 1, 1977
Cattle & Calves	22,200	23,700
Cows & Heifers that have calved	6,700	6,200
Sheep & Lambs	3,000	4,300

FIELD CROPS

Item	Year	PRODUCTION			VALUE		
		Harvested Acreage	Tons Per Acre	Total Tons	Unit	Price Per Unit	Total
Alfalfa Hay	1976	4,606	5.25	24,182	ton	\$ 76.50	\$ 1,849,923
	1975	4,219	5.5	23,204	ton	60.00	1,392,240
Irrigated Pasture	1976	7,184	x	x	acre	5.90	42,386
	1975	7,184	x	x	acre	7.14	51,293
Dry Grazing	1976	31,096	x	x	acre	.81	25,188
	1975	31,096	x	x	acre	.73	22,700
Oat Hay	1976	200	2.25	450	ton	70.00	31,500
	1975	316	2.5	792	ton	55.00	43,560
Sudan Hay	1976	100	2.25	225	ton	64.00	14,400
	1975	75	2.5	187	ton	50.00	9,350
TOTAL FIELD CROPS				1976	\$ 1,963,397		
				1975	\$ 1,519,143		

MONO COUNTY TOTALS

	1975	1976
Livestock	\$ 3,197,960	\$ 3,777,646
Livestock Products	180,000	276,000
Field Crops	<u>1,519,143</u>	<u>1,963,397</u>
TOTALS	\$ 4,897,103	\$ 6,017,043
