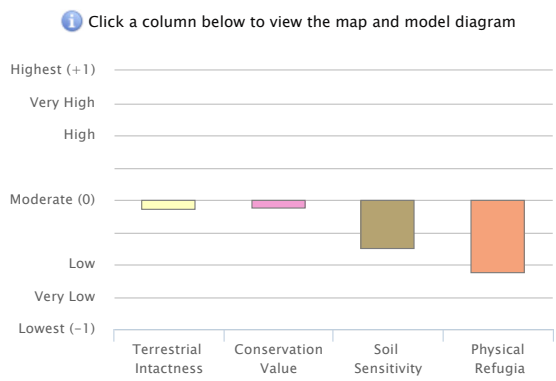
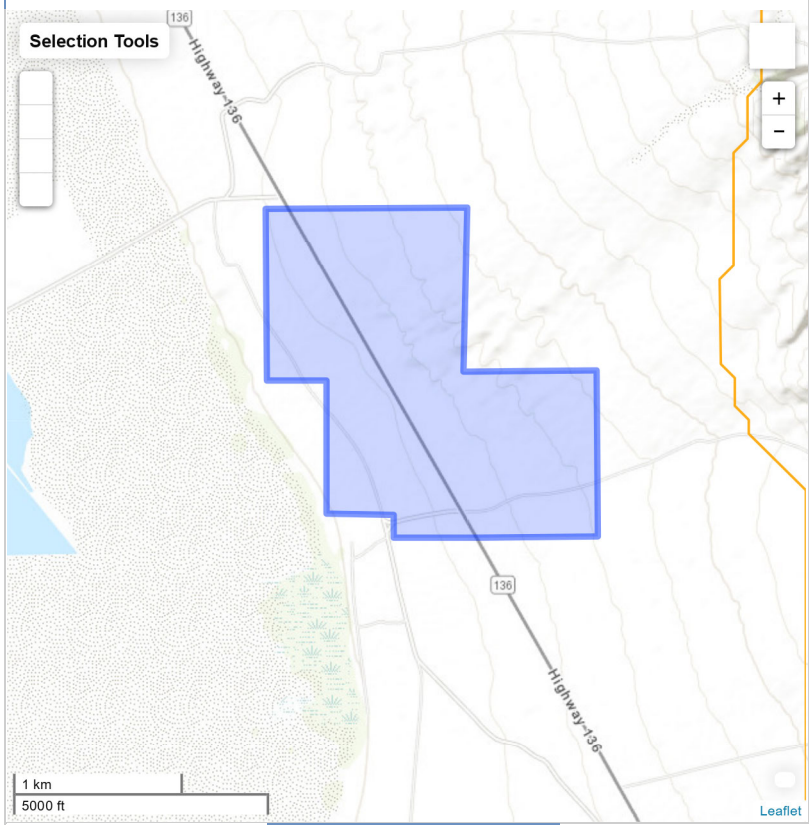




Select a Location

Model Results

Mean



Covered Species

Covered Communities

Click a node in the diagram above to map the model component

Click an image below to map the modeled distribution



Lower Bajada and Fan Mojavean - Sonoran Desert Scrub



Shadscale - Saltbush Cool Semi-desert Scrub



Southwestern North American Salt Basin And High Marsh

Conservation Management Actions (CMAs)



Community: Lower Bajada and Fan Mojavean – Sonoran Desert Scrub

In the Reserve Design

BLM LUPA Lands:

AM-RES-BLM-1: The following CMA will be implemented on BLM LUPA conservation designations for all natural communities and Covered Species: The values, goals, objectives, and management actions established in the BLM special land allocation management plans (i.e., NLCS, ACEC and wildlife allocation) apply to land with BLM LUPA conservation designations, as described in [Appendix L](#). Natural communities and Covered Species within BLM LUPA conservation designations will be managed according to the unit-specific management actions to maintain the vegetation, fish and wildlife, and other resource values within the NLCS/ACEC/Wildlife Allocation unit as described in the BLM special land allocation management plans (see [Appendix L](#)).



Community: Shadscale – Saltbush Cool Semi-desert Scrub

In the Reserve Design

BLM LUPA Lands:

AM-RES-BLM-1: The following CMA will be implemented on BLM LUPA conservation designations for all natural communities and Covered Species: The values, goals, objectives, and management actions established in the BLM special land allocation management plans (i.e., NLCS, ACEC and wildlife allocation) apply to land with BLM LUPA conservation designations, as described in [Appendix L](#). Natural communities and Covered Species within BLM LUPA conservation designations will be managed according to the unit-specific management actions to maintain the vegetation, fish and wildlife, and other resource values within the NLCS/ACEC/Wildlife Allocation unit as described in the BLM special land allocation management plans (see [Appendix L](#)).



Community: Southwestern North American Salt Basin And High Marsh

In the Reserve Design

BLM LUPA Lands:

AM-RES-BLM-1: The following CMA will be implemented on BLM LUPA conservation designations for all natural communities and Covered Species: The values, goals, objectives, and management actions established in the BLM special land allocation management plans (i.e., NLCS, ACEC and wildlife allocation) apply to land with BLM LUPA conservation designations, as described in [Appendix L](#). Natural communities and Covered Species within BLM LUPA conservation designations will be managed according to the unit-specific management actions to maintain the vegetation, fish and wildlife, and other resource values within the NLCS/ACEC/Wildlife Allocation unit as described in the BLM special land allocation management plans (see [Appendix L](#)).