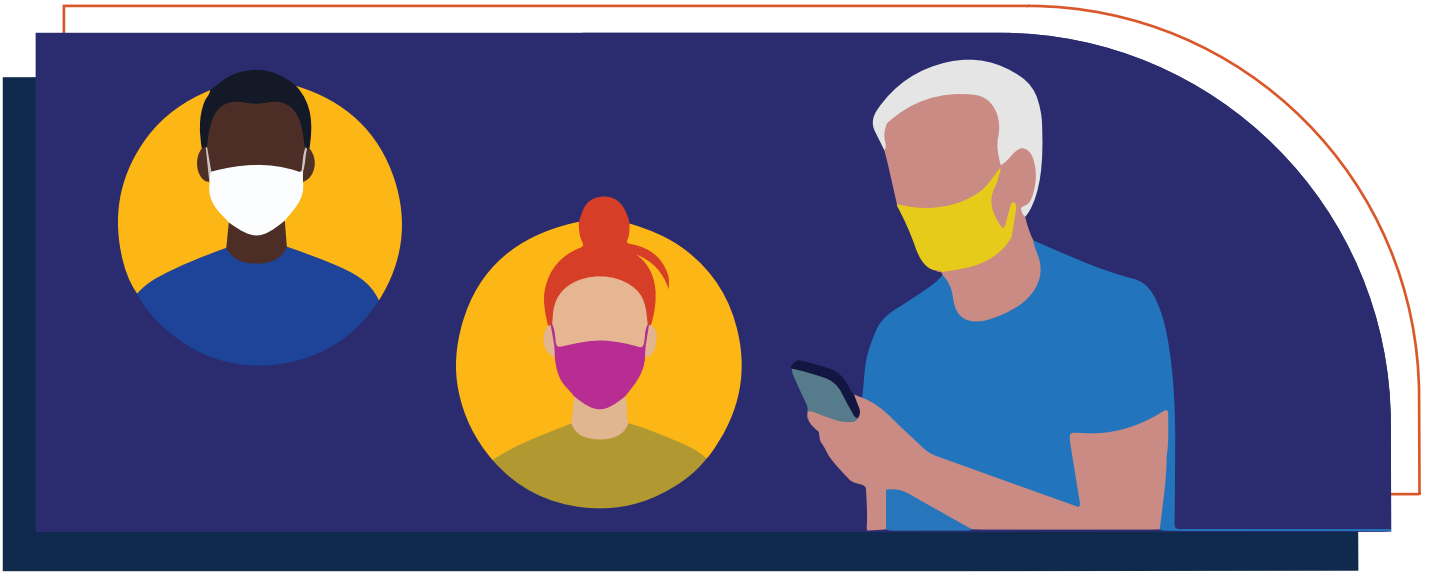


HEALTHCARE FACILITY FACE MASKS REQUIRED



All individuals must follow the requirements in the Guidance for the Use of Face Coverings issued by the California Department of Public Health.

» Full Vaccinated Individuals

Masks are not required for fully vaccinated individuals, except in the following settings where masks are required for everyone regardless of vaccination status:

- On public transit (ex: airplanes, buses, trains, shared rides)
- Indoors in K-12 schools, childcare, and other youth settings
- **Healthcare settings, including long term care facilities**
- State and local correctional facilities and detention centers
- Shelters: homeless shelters, emergency shelters, and cooling centers

» Unvaccinated Individuals

Masks are required for unvaccinated individuals in indoor public settings and businesses (ex: retail, restaurants, theaters, meetings, **healthcare settings**, and state/local government offices serving the public).



Scan QR codes with smartphone camera to view guidance