



ADMINISTRATOR'S OFFICE COUNTY OF INYO

P. O. BOX N • INDEPENDENCE, CALIFORNIA 93526
TELEPHONE (760) 878-0292 □ FAX (760) 878-0456
Nate Greenberg, COUNTY ADMINISTRATIVE OFFICER
e-mail: ngreenberg@inyocounty.us



DATE: October 25, 2022
TO: Prospective Vendor
FROM: Donald Gockley - Inyo County Public Works – Road Department
RE: Bid No. **RD22-04 – Plant Mixed Asphalt (Cold Mix)**

DUE DATE: **November 9th, 2022, by 3:30 p.m. (PST)**

Please find enclosed a bid packet for your review. If your company would like to participate, please complete the enclosed Instructions & Conditions form and return via mail by the specified date. No faxes or emails will be accepted.

For questions about the bidding process, please contact Denelle Carrington at dcarrington@inyocounty.us

For questions, please contact Donald Gockley at dgoekley@inyocounty.us.

It will be the responsibility of interested parties to visit the website frequently to ensure of any new information that may be available at www.inyocounty.us/Bid_Packages.html.

Donald Gockley Jr
Donald Gockley Jr
Engineering Technician

COUNTY OF INYO (760) 878-0201

MATERIAL OR SERVICES
TO BE DELIVERED TO:

INYO COUNTY ROAD DEPARTMENT

RETURN BIDS TO:

INYO COUNTY BOARD CLERK
COUNTY ADMINISTRATIVE CENTER
P.O. BOX N
224 NORTH EDWARDS STREET
INDEPENDENCE, CA 93526

BID OPENING: DATE: Wednesday, November 9, 2022, TIME: 3:30 P.M. (PDT)

Prices quoted FOB DESTINATION UNLESS OTHERWISE STATED.

MAKE YOUR BID OR QUOTATIONS IN THE SPACE PROVIDED ON THE ATTACHED SHEETS.

IMPORTANT: Bid must be sealed with bid number as indicated above on the outside of the envelope.

Read the Instructions and Conditions before making your Bid or Quotation.

INSTRUCTIONS & CONDITIONS

1. All prices and notations must be typewritten or written in ink. No erasures permitted. Mistakes may be crossed out and corrections made adjacent and must be initialed in ink by person signing quotation.
2. State brand or make on each item. If quoting an article exactly as specified, the words "or equal" must be stricken out by the bidder. If quoting on other than make, model or brand specified, the manufacturer's name and the catalogue number must be given, or descriptive cut and information attached to the quotations.
3. Quote on each item separately. Prices should be stated in units specified herein.
4. Each quotation must be in a separate sealed envelope with bid number, on outside, and must be submitted to the Inyo County Board Clerk, not later than the hour and day specified hereon, at which time it will be publicly opened and read. A properly addressed and bid numbered envelope, without postage, is included for your convenience.
5. Time of delivery is a part of the consideration and must be stated in definite terms, and must be adhered to. If time varies on different items, the bidder shall so state in the column provided, opposite each item.
6. Terms of less than 10 days for cash discount will be considered as net.
7. All quotations must be signed with the Firm's name and by a responsible officer or employee. Obligations assumed by such signature must be fulfilled.
8. No charge for packing, drayage, or for any other purpose will be allowed over and above the prices quoted on this sheet.
9. The right is reserved, unless otherwise stated, to accept or reject any or all quotations, or any part thereof, either separately or as a whole, or, to waive any informality in a bid.
10. Samples of items, when required, must be furnished free of expense to the County of Inyo and if not destroyed by tests, will upon request be returned at the bidders expense.
11. In case of default by the vendor, the County of Inyo may procure the articles or service from other sources.
12. Cost of transportation, handling, and/or inspection on deliveries or offers for delivery, which do not meet the specifications will be for the account of the vendor.
13. The vendor shall hold the County of Inyo, its officers, agents, servants and employees, harmless from liability of any nature or kind on account of use of any copyrighted, or uncopyrighted composition, secret process, patented or unpatented invention, article or appliance furnished or used under this quotation.

14. The vendor will not be held liable for failure or delay in fulfillment if hindered or prevented by fire, strikes, or Acts of God.
15. Quotations are subject to acceptance at any time within 30 days after opening same, unless otherwise stipulated.
16. Verify your quotations before submission as they cannot be withdrawn, or corrected, after being opened.
17. Return this sheet whether or not you quote a price. If you do not quote, state your reason, otherwise your name may be removed from the mailing list.
18. Amounts paid for transportation of property to the County of Inyo are exempt from Federal Transportation Tax. An exemption certificate is not required where the shipping papers show the consignee as County of Inyo, as such papers may be accepted by the carrier as proof of the exempt character of the equipment.
19. **There is a contracting preference of 5% for small business enterprises and 8% for local businesses available for this Request for Proposals (bids). To be eligible for the preferences, a small business enterprise must submit proof of state registration as a SBE with its bid and a local business must provide certification that it is a local business as defined by Inyo County Code §6.06.020 (b) with its bid.**

THE FOLLOWING MUST BE FILLED IN BY THE BIDDER IN SUBMITTING HIS/HER BID:

DATED AT _____ (CITY & STATE)

_____, 20____

CASH DISCOUNT TERMS _____

To the County of Inyo: We (I) hereby agree to furnish the articles and/or services,
at the prices and terms stated subject to the instructions and conditions set forth
in this bid.

NAME OF COMPANY _____

NAME OF COMPANY REPRESENTATIVE (PRINTED) _____

COMPANY REPRESENTATIVE SIGNATURE _____

STREET ADDRESS _____

CITY AND STATE _____

PHONE NUMBER _____

FAX NUMBER _____

SCOPE OF WORK/SPECIFICATIONS FOR PROVISION OF PLANT MIXED ASPHALT

Base Bid

ITEM	DESCRIPTION	EST. QTY.	UNIT	UNIT PRICE
1	½" SC-800 Cold Mix Asphalt	1715	Ton	
2	Delivery to Bishop, CA Mixing Table on Sunland Drive	465	Ton	
3	Delivery to Big Pine, CA Mixing Table on County Road	690	Ton	
4	Delivery to Lone Pine, CA Mixing Table on Tuttle Circle Road	560	Ton	

*The base bid plus the bid additive alternates will be awarded if the total falls within budgetary limits.

1. MATERIAL

Aggregate shall conform to the 2015 Standard Specifications, State of California, Department of Transportation, for type A Asphalt Concrete 1/2" gradation.

Liquid asphalt binder shall be SC-800.

On delivery, the Contractor shall furnish a certificate of compliance, showing that the material in each shipment conforms to all specification requirements. If the material when sampled and tested, fails to meet any specification requirements, the Contractor shall immediately replace any of such material remaining unused with material that meets the specifications. The County will make no payment for any portion of material already used, which is found to fail to meet specification requirements by those tests.

2. DELIVERY

Prices will be for delivered material, split into the quantity's listed above, each being delivered to Bishop, Big Pine, and Lone Pine, CA, mixing tables as specified. Mixing table coordinates are located and shown in the attached documents.

Coordination with the Inyo County Road Department (760-878-0202) will be required after award for delivery of product to the mixing table.

3. BID SUBMITTAL

Please submit your bid in a SEALED envelope labeled with "**BID NO. RD22-04 – Plant Mixed Asphalt**" and the name of the Bidder printed on the **outside** of the mailing envelope to assist in quick identification.

Bids must be submitted by the time and date specified below to the Inyo County Board Clerk, P.O. Drawer N (mail), Independence, CA 93526, or by delivery to the Board Clerk at 224 N. Edwards Street, Independence, CA 93526 by or before **3:30 P.M. on November 9, 2022.**

Note: PLEASE BE ADVISED that despite information you may receive from mail services, “Overnight” delivery by the USPS, UPS, FedEx, and other carriers is often scheduled as a two-day delivery due to the remote nature of Inyo County.

For questions or comments regarding this bid, please contact Donald Gockley Jr at dgoekley@inyocounty.us.

NOTE: YOUR NAME & ADDRESS (NOT HANDWRITTEN) MUST APPEAR ON THE ENVELOPE WHEN RETURNING YOUR BID. ENVELOPES WITHOUT A RETURN ADDRESS WILL BE DISPOSED OF WITHOUT BEING OPENED.

Base Bid	
Subtotal	
Sales Tax (7.75%)	
Shipping Charge	N/A
Total	

Total of Base Bid + Additive Alternates No. 1 & 2 _____

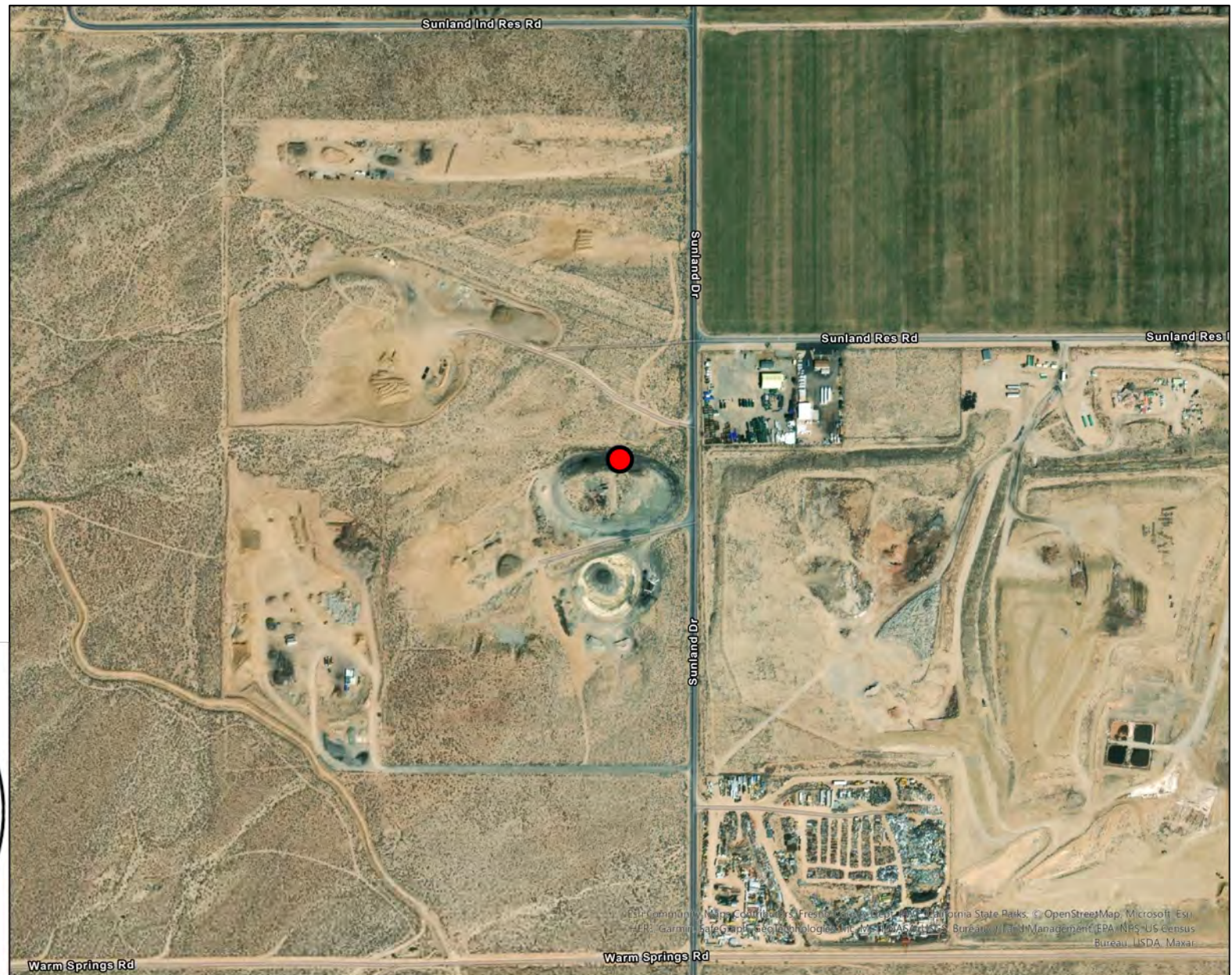
Product will be available for delivery to the indicated mixing tables within _____ days after receipt of order.

Bid prices will remain valid and in effect through _____

Indicate any exception to the bid:

END OF BID PACKAGE

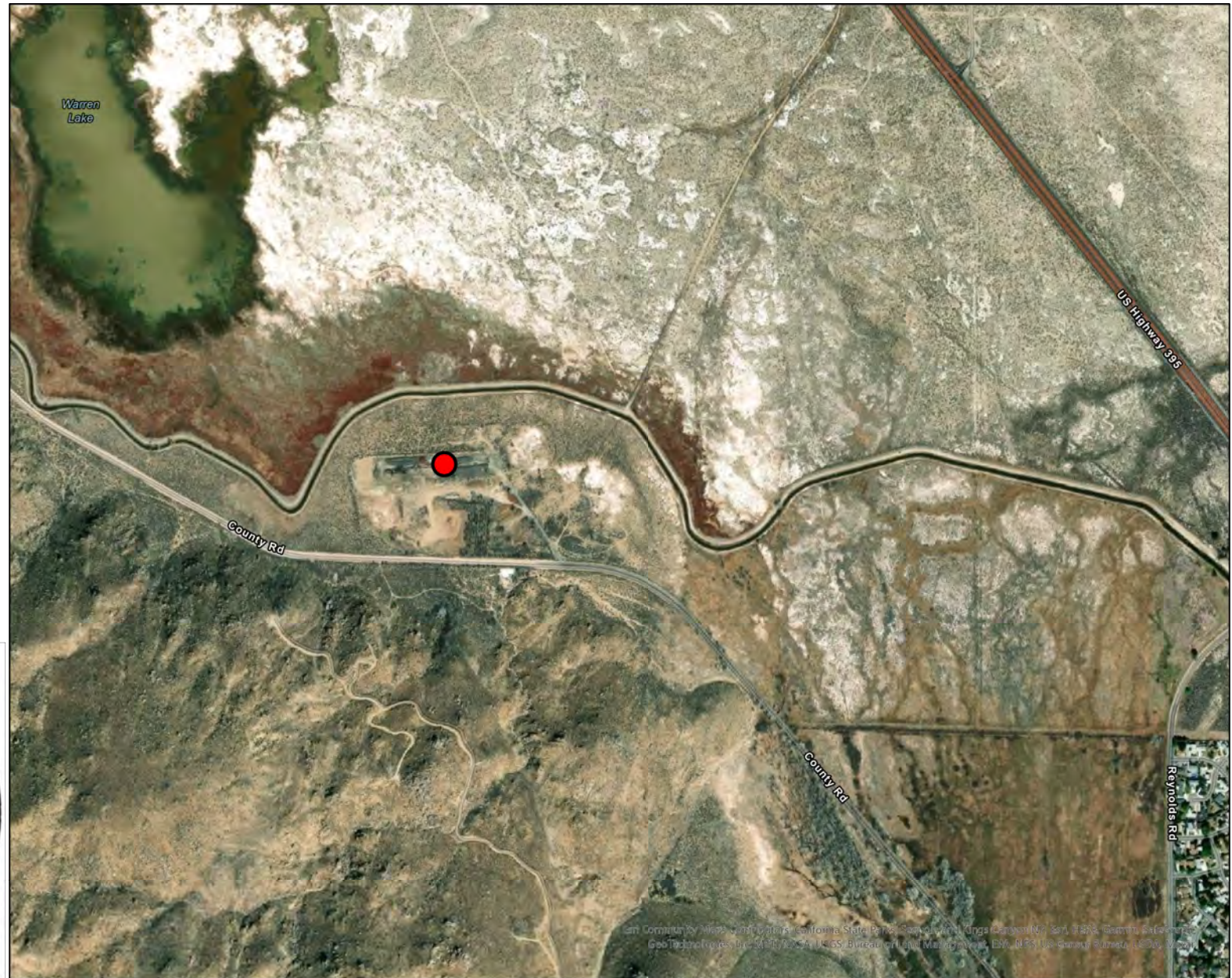
Coordinates:
118.4057133°W 37.3308428°N



County of Inyo Road Bid
RD22-04 Plant Mixed
Asphalt Attachment.

Delivery location:
County Road,
Big Pine Ca, 93513.

Coordinates:
118.3244187°W 37.1893425°N



County of Inyo Road Bid
RD22-04 Plant Mixed
Asphalt Attachment.

Delivery location:
Tuttle Creek Road,
Lone Pine Ca, 93545.

Coordinates:
118.0716562°W 36.5952030°N

