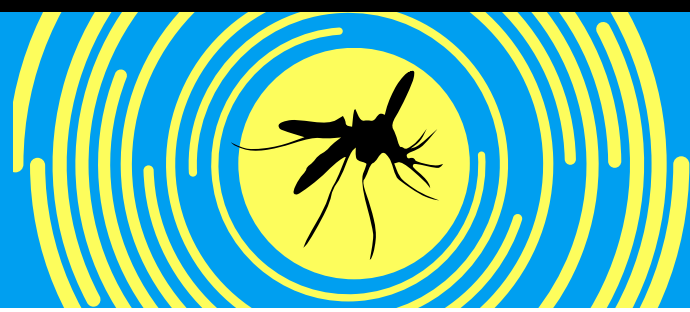


WHAT YOU SHOULD KNOW WEST NILE VIRUS SIGNS and SYMPTOMS



WHAT IS IT?

West Nile virus can be a serious, even fatal, illness. It can affect people and animals.

HOW DOES IT SPREAD?

A bite from an infected mosquito spreads West Nile virus. Contact with infected people or animals does not spread West Nile virus.

PROTECT YOURSELF FROM MOSQUITO BITES.



Wear the right gear:
Long-sleeved shirts
and long pants.

Use Environmental Protection
Agency (EPA)-registered
insect repellents.



Drain anything that holds
water at least once per week.



WHAT ARE THE SYMPTOMS?

Fever, headache, swollen lymph nodes, rash,
nausea, vomiting, and body aches.

Most infected people
won't get sick



20% of infected
people will get sick.



Less than 1%
of infected people
will get very sick.



LEARN MORE:

www.cdc.gov/westnile



**IT'S NOT
JUST A BITE.**

JUNE 2023
V-1.0

INYO-HHS
PUBLIC HEALTH