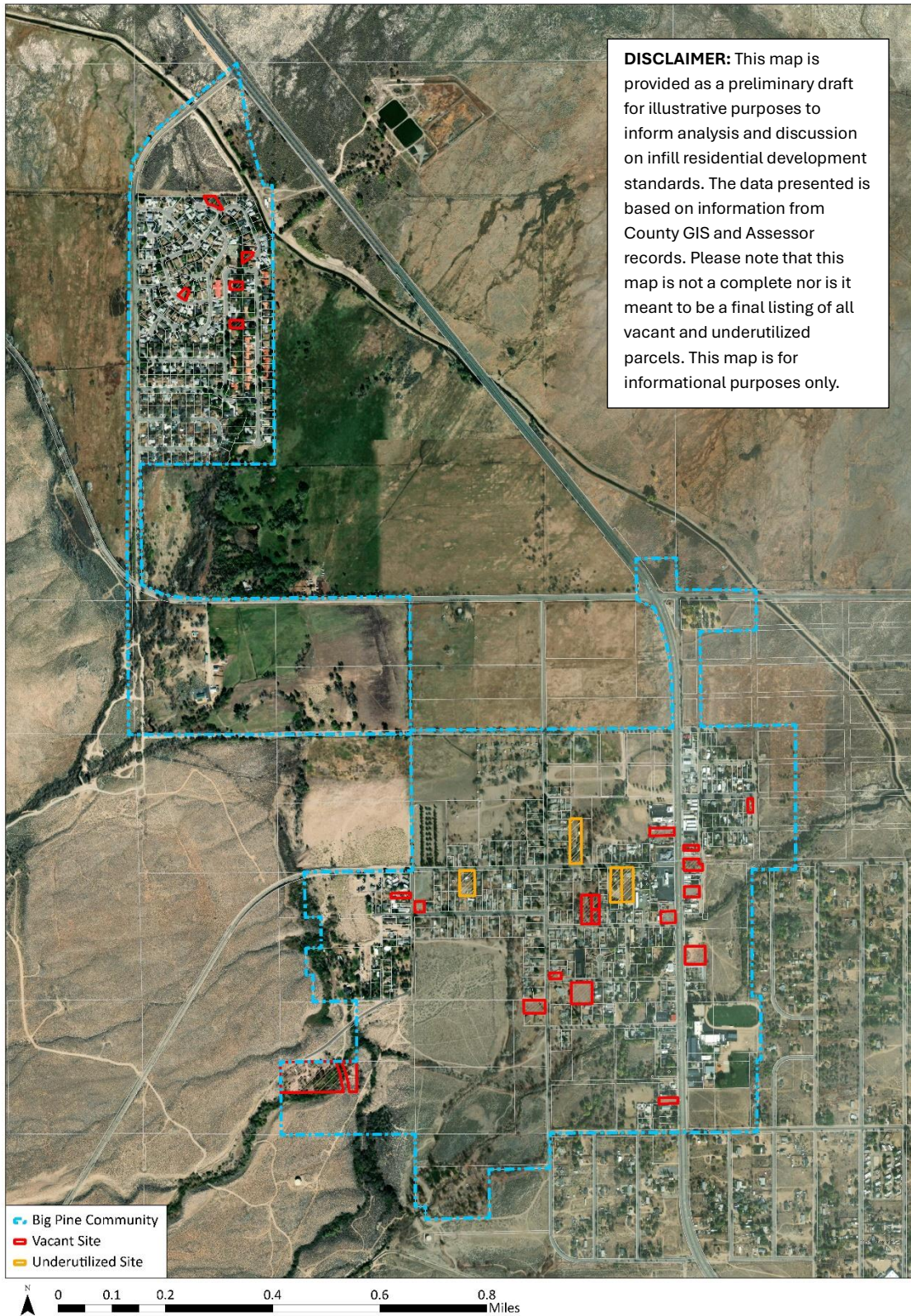


PRELIMINARY DRAFT COMMUNITY MAPS

FEBRUARY 2025

BIG PINE COMMUNITY - VACANT AND UNDERUTILIZED



Questions? Contact Inyo County Planning, (760) 878-0263

PRELIMINARY DRAFT COMMUNITY MAPS

FEBRUARY 2025

INDEPENDENCE COMMUNITY - VACANT AND UNDERUTILIZED

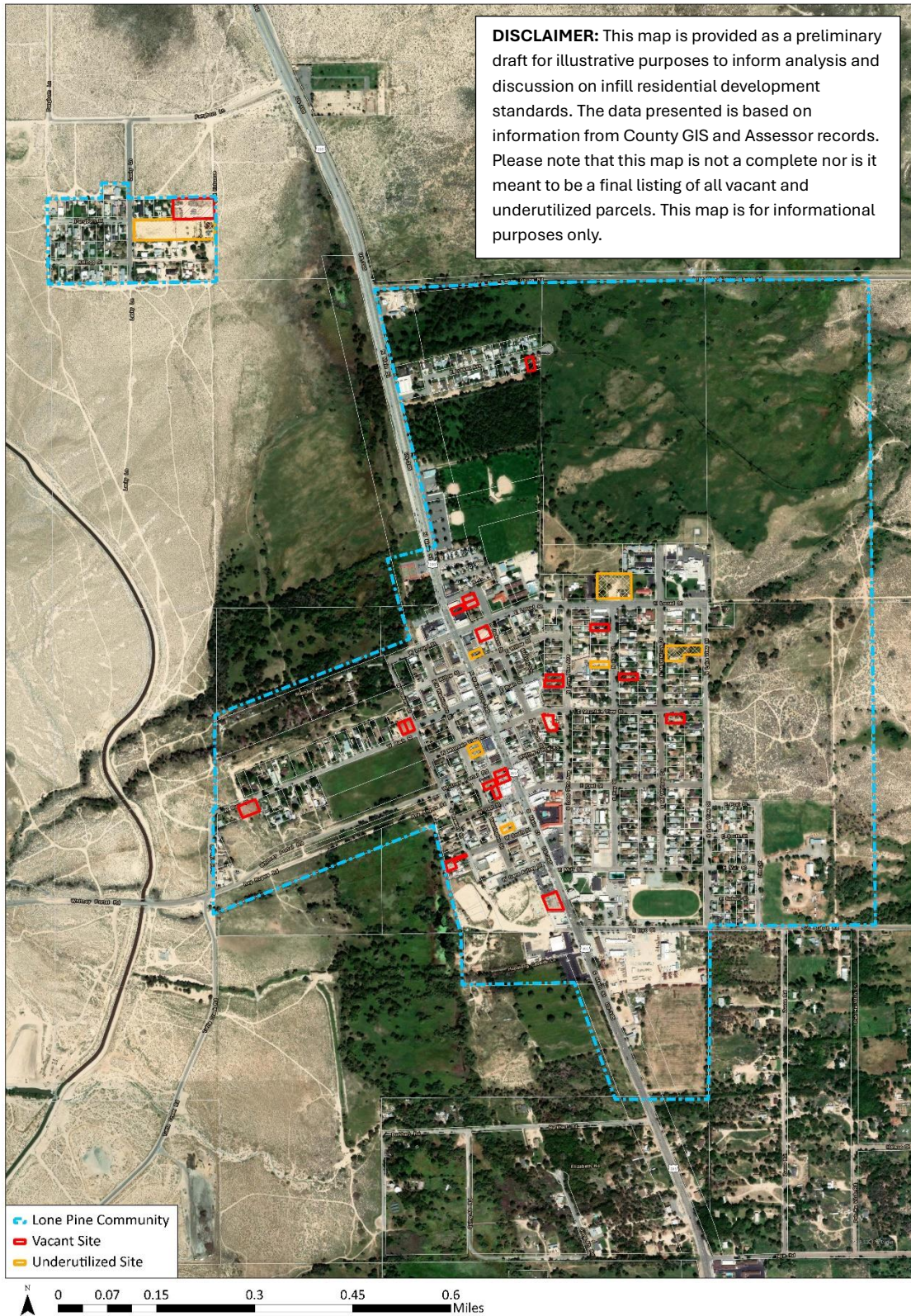


Questions? Contact Inyo County Planning, (760) 878-0263

PRELIMINARY DRAFT COMMUNITY MAPS

FEBRUARY 2025

LONE PINE COMMUNITY - VACANT AND UNDERUTILIZED



Questions? Contact Inyo County Planning, (760) 878-0263